

Sevenoaks District

Community Safety Partnership

Annual Action Plan

2024-25 DRAFT



Action Plan 2024-25
Contents

Introduction	Page 3
Priority issues 2024-25	Page 4
Success measures	Page 7
Serious & Acquisitive Crime incl Crime Trends & Serious Violence Duty	Page 8
Anti-Social Behaviour incl Environmental Crime	Page 11
Domestic Abuse incl Stalking & Harassment	Page 15
Safeguarding including Young People, Adults at Risk, Child Sexual Exploitation (CSE), Modern Slavery, Human Trafficking, Prevent, Care Act and Mental Health	Page 19
Violence against Women & Girls	Page 22
Business Crime	Page 24
Drugs & County Lines	Page 25
Members of the Partnership	Page 27
Terms of reference	Page 28
Partnership structure	Page 29
What is Sevenoaks District like	Page 30

This publication is available in large print. For a copy call (01732 227414).

www.sevenoaks.gov.uk

If you need help communicating with us or understanding this document, we can arrange for an interpreter to help you.
Please contact us on 01732 227000 stating your language and telephone number

Introduction

The Community Safety Plan is to meet the duties under Sections 5 and 6 of the Crime and Disorder Act 1998. Section 6 of the Crime and Disorder Act 1998 places obligations on Community Safety Partnerships to formulate a Strategic Assessment to ascertain the levels and patterns of crime, disorder, antisocial behaviour and substance misuse in their area; in order to identify the priorities for a Community Safety Plan. Following the completion of the Strategic Assessment, the Community Safety Plan is then developed to address the priorities identified by the Strategic Assessment.

The Sevenoaks District Community Safety Partnership brings together all of the agencies in the District who can have an impact on crime, anti-social behaviour and the fear of crime. A list of partners is set out on page 25. The Partnership has three overarching aims. They are to:

- Reduce and detect crime
- Reduce anti-social behaviour and the fear of crime
- Strengthen community involvement

Each year the Partnership, in common with all of the Community Safety Partnerships in Kent, undertakes an assessment of crime and disorder in the District, using data provided by partners and feedback from residents. The assessment identifies the priority issues for the next year using the following rationale for each community safety type:

- Whether there is significant community concern
- Whether there is an increasing trend
- Whether it contributes to a high volume of crime
- The level of harm it causes
- How well it is performing compared with other parts of Kent
- Whether the Partnership can add value to the work

This Action Plan identifies where we can best work together to achieve results.

Priority Issues for Sevenoaks District in 2024-25

Sevenoaks District continues to be one of the safest places to live in Kent.

The Strategic Assessment was undertaken during the winter of 2023 and identified seven priorities for the Partnership to tackle during 2024-25. The data referred to in this Action Plan is based on the Strategic Assessment, and uses data between 1 October 2022 – 30 September 2023, unless otherwise stated. Trends in the identified priorities continue to be monitored on a quarterly basis and the first monitoring will be available in July 2024.

The seven priorities, as ranked in the Strategic Assessment, are:

- Safeguarding (including Mental Health, Prevent, Human Trafficking, Modern Slavery, CSE (Child Sexual Exploitation), Vulnerable Adults and Protecting Children)
- Serious and Acquisitive Crime incl crime trends & Serious Violence Duty
- Drug and County Lines¹
- Business Crime
- Violence against Women & Girls
- Domestic Abuse incl Stalking & Harassment
- Anti-Social Behaviour incl Environmental Crime

Although the Partnership's main focus will be the seven priorities, it will continue to monitor and plan for trends in crime and other community safety issues and address them through the Community Safety Unit's daily briefings and other tasking arrangements in order to reduce recorded crime.

Strategic Drivers

Serious Violence Duty: The Police, Crime, Sentencing and Courts Act 22 received Royal Assent in April 2022, with statutory guidance issued in December 22. Part 2 of the Act creates a requirement for specified authorities to collaborate and plan to reduce or prevent serious violence. Changes have also been made to the Crime and Disorder Act 1998 to

¹ County Lines refer to organised ways of dealing drugs

ensure that preventing and reducing serious violence is a priority for CSPs. Within Kent, new Partnership arrangements are being developed to ensure that agencies can comply with this new duty.

Budgets: Many partner agencies are faced with depleting budgets and savings needing to be made, both as a result of covid, worsening national finances and cost of living. This will impact upon community safety delivery both in terms of resources available for delivery, staff and grants available. This has been considered in the formation of this Community Safety Plan and how those resources available can be best used to ensure the delivery of the identified priorities.

Kent Police Neighbourhood Policing Model: The new Neighbourhood Policing Model was implemented in Summer 2023 and has seen changes in the way they respond to neighbourhood-based issues. The Partnership will need to integrate these changes into our existing delivery models.

Cost of Living: The Cost of Living Crisis continues to impact on residents as well as individual agencies. These impacts need to continue to be monitored by partners and the impact on delivery against our priorities.

The Action Plan

The Action Plan sets out the overall targets for the Community Safety Partnership. It does not include details of the numerous activities already undertaken by partners, town and parish councils, the voluntary sector and others as part of their day-to-day work, but highlights activities in addition to core work, which partners will undertake throughout the forthcoming year. All priorities include actions around public perception and reducing repeat offenders/victims.

Funding and monitoring

Funding for the actions included within the Action Plan is available from a number of sources, including partners' own budgets, Police & Crime Commissioner's (PCC) funding which is allocated to district Community Safety Partnerships, and other small amounts of funding from a variety of sources.

Regular monitoring will take place to ensure that individual projects continue to deliver positive results as well as value for money and that this Action Plan is on target.

Equalities

In preparing the action plan, issues such as equality and diversity were considered to ensure that everybody feels safe in the District.

The Community Safety Partnership recognises that everyone has a contribution to make to our society and a right to access services without being discriminated against or disadvantaged because of their:

- Race, colour, nationality, ethnicity.
- Gender, marital status or caring responsibility.
- Sexual orientation.
- Age.
- Physical or mental disability or mental health.
- Religion or belief.
- Health status.
- Employment status.

ACTION PLAN 2024-2025: SUCCESS MEASURES

All recorded crime

All Victim Based Crime – Maintain position in the lowest 3 District/Borough in the County.

Serious & Acquisitive Crime incl Crime Trends and Serious Violence Duty

Improve the position of Vehicle Crime and Burglary within the County.

Working with partners reduce the numbers of serious violence with injury in the District.

Safeguarding (including Prevent, Mental Health, Human Trafficking, Modern Slavery, CSE (Child Sexual Exploitation), Vulnerable Adults and Protecting Children)

Deliver training on all types of Safeguarding.

Maintain position in the lowest 3 District/Borough in the County for Human Trafficking/Modern Slavery and CSE.

Drugs and County Lines

Reduce the number of County Lines across the District.

Number of young people engaged with around drug misuse.

Business Crime

Maintain position in the lowest 3 District/Borough in the County for shoplifting.

Increase number of convictions for Business Crime.

Violence against Women and Girls (VAWG)

Increase VAWG Walks compared to previous year and work with the community on feelings of safety.

Implement a West Kent Action Plan on VAWG.

Domestic Abuse Stalking and Harassment

Reduce the number of repeat victims of stalking & harassment and domestic abuse.

Increase training for partners and communities on Domestic Abuse and Stalking and Harassment.

Anti-Social Behaviour (ASB) incl Environmental Crime

Maintain position in the lowest 3 District/Borough in the County.

Serious & Acquisitive Crime incl Crime Trends and Serious Violence

Acquisitive crime consists of Burglary (Residential and Commercial and Business) and Vehicle Crime (Theft of and Theft from – TOMV and TFMV). Although there have been rises and falls throughout the time period, the number of reported crimes are relatively low, but they do sit high in county comparisons. These types of crime have a high impact on the local community. We would also look at crime trends for example we know that catalytic convertors, keyless car thefts, high value car types such as Range Rovers and cable thefts do have trends over time across the District.

Criminals behind serious and tactical crime often intimidate and create fear, which is intended to prevent the local community reporting what they see. Often the criminals behind this don't even have to try hard to do this – instead relying on word of mouth and reputation. Organised Crime Groups (OCGs) have been tackled using a more targeted approach by partners, including cross-border partners. Trends are monitored at the monthly Serious Crime & Tactical Meeting. The most common crime types associated with these groups is commonly organised theft.

Specific types of crime such as homicide, knife crime, robbery and gun crime, and areas of criminality where serious violence or its threat is inherent, such as domestic abuse, sexual offences, gangs, county lines and drug supply.

Crime Type	Recorded Offences/Incidents					County Position	
	This Year	Last Year	% Change	No. change	Direction	21/22	22/23
Robbery	34	36	-5.6%	-2	▼	2	2
VAP	2806	3214	-12.7%	-408	▼	1	1
Sexual	213	247	-13.8%	-34	▼	1	1
Possession of weapons	65	69	-5.8%	-4	▼	3	2
Public Order	405	538	-24.7%	-133	▼	1	1

Serious Violence Duty

The Serious Violence Duty requires specified authorities to work together to prevent and reduce serious violence, including identifying the kinds of serious violence that occur in the area, the causes of that violence and to prepare and implement a strategy for preventing and reducing serious violence. The Office of the Kent Police and Crime Commissioner (OPCC) convened a partnership board meeting with relevant strategic authorities (Kent Police, K&M Violence Reduction Unit, Public Health (Kent & Medway), NHS, KCC and District/Borough Councils) in 2023. The Board is co-ordinating a

multi-agency response in developing a Serious Violence Strategic Needs Assessment and Strategy for Kent & Medway by early 2024. Work will be implemented through a Serious Violence Network meeting. The assessment findings will be used to define serious violence issues and prioritise bespoke actions that the partnership will take forward. The partnership will collectively develop an action plan outlining the multi-agency response that to help prevent and reduce serious violence in Kent and Medway. This should comprise of a range of new and existing actions that support local Community Safety Partnerships take forward this priority to prevent and reduce issues.

The cost of living crisis

The cost of living has become an issue of major political concern in the UK. The subsequent war in Ukraine and consequential energy challenges, followed by rising inflation and interest rates, have added to the mounting concern and resulted in large scale government interventions. The cost of living crisis is putting more people at risk of crime. Acquisitive crime often increases in periods of economic downturn.

Serious and Acquisitive Crime including Crime Trends and Serious Violence				
	Priority Action	Lead Agency	Other Partners	By When
1.1	Monthly Serious Crime & Tactical Group to address crime trends for the District and to deliver partnership actions/initiatives. Identifying Organised Crime Groups (OCG)	Serious Crime & Tactical Group (SCTG)	Kent Police All Partners	Ongoing
1.2	Number of My Community Voice/Twitter & Facebook posts updating residents on crime trends and where positive arrests have been made in relation to acquisitive crime, crime trends and serious violence	Kent Police SDC	All Partners	Ongoing
1.3	Work with Violence Reduction Unit (VRU) on reducing the number of serious violence and including joint projects to address certain crime types such as knife crime	VRU	CSU All	Ongoing
1.4	CSU to offer reassurance and follow up visits following burglary and vehicle crime, including free giveaways to protect cars, out buildings. Greater use of Community Warden resource in follow up visits in communities where CWs are based	CSU KCC Wardens	PCSOs	Ongoing

1.5	Serious Violence Duty to be added to the Serious Crime & Tactical Group (SCTG) to discuss specific crime types such as Specific types of crime such as homicide, knife crime, robbery and gun crime, and areas of criminality where serious violence or its threat is inherent, such as domestic abuse, sexual offences, gangs, county lines and drug supply and take forward actions including an Needs Assessment	Kent Police	All	Monthly
1.6	Analytical data to be provided by Kent Police on acquisitive crime and violent crime to look at crime trends/offenders for the partnership and SCTG to take forward	Kent Police SCTG	All	Monthly
1.7	Child Centred Policing Team to develop and promote a schools programme on Serious & Violent Crime	Kent Police VRU	CSU	Sept 2024

Anti-Social Behaviour including Environmental Crime

ASB accounts for the second largest recorded issue when compared to individual crime types in the District. Figures show 1,221 recorded incidents of ASB occurring within the District were reported to Kent Police. The District had the lowest number of ASB reports in Kent even though there was an increase of 11.6% (127 reports).

The CSU Daily tasking's meetings dealt with 420 ASB/Community Safety calls from October 2021 - September 2022. This is a decrease of 8 calls (1.9%) compared to same period last year. All actions were followed up and residents were kept updated in all actions unless they had been reported anonymously. SDC, Police, and West Kent Housing attend the CSU daily tasking on a daily basis. The CSU has continued meeting daily even though Police implemented changes to the CSU from 1 June 2023.

Recorded incidents of anti-social behaviour were higher in the period from October 2022 until September 2023. The total number of ASB reports received by the Council during October 2022 and September 2023 equals 88 calls. This is 2 less calls than the same period last year, when 90 calls were received, which equates to a 2.2% decrease in calls received. Sevenoaks Town & St Johns had the highest number of reports of anti-social behaviour to the District Council with 10. Dunton Green & Riverhead and Swanley Whiteoak was 2nd highest with 9.

The highest type of anti-social behaviour reported is Nuisance Behaviour with 31 reports. This is followed by Vehicle related nuisance. Calls by type are always higher than reports received as residents can report more than one type at a time.

During the period of October 2022 and September 2023, 39 Anti-Social Behaviour warning letters and 46 Acceptable Behaviour Agreement contracts were issued to named individuals. 6 Acceptable Behaviour Agreement Breach letters were also served.

There have been 10 Community Protection Warnings served and 6 Community Protection Notices served.

A PSPO (Public Spaces Protection Order) public consultation was undertaken for The Vine, Sevenoaks in regards to consistent ASB. As a result, the public consultation response was overwhelmingly positive in terms of supporting the introduction of the PSPO and the order will be brought into force in early 2024. At the time of writing this there is a current PSPO consultation out for vehicle nuisance in Halstead and if approved will be implemented in May 2024.

SDC CCTV

From 1 October 2022 to 30 September 2023 the CCTV Control Room at Sevenoaks District Council assisted the police with 91 arrests for this period. They also dealt with 2,889 Emergency Out of Hour calls, 8 unauthorised encampments, 1 mental health safeguarding case and 139 Missing people and vulnerable persons.

West Kent Housing

From 1 October 2022 – 30 September 2023 WKHA received 1091 complaints of antisocial behaviour and other community safety related matters. This is an increase of 10% over the same period for the previous year.

SDC Environmental Health

Between 1st October 2022 and 30th September 2023, the Environmental Protection Team received 1,086 service requests relating to issues within Sevenoaks District, this is 13 less than the same period last year, a 1% decrease. Of the 1,086 Service Requests received by Sevenoaks, 470 relate to matters associated with noise and 616 relate to non-noise related service requests such as dog fouling, accumulations and other anti-social activities.

SDC Direct Services

SDC received 357 reports of abandoned vehicles for the period October 2022 – September 2023. This is a 60.18% increase compared to the same period in the previous year. Of the 357 reported vehicles only 2.2% (8 vehicles) were genuinely abandoned and required removal. Last year's percentage of vehicles removed against number reported was 6.5%.

Graffiti

Graffiti reports to the Council have decreased by 17 reports this year with 40 recorded incidents (incl offensive). There were 6 offensive graffiti reports between October 2022 and September 2023 all of which were removed within the 48 hour deadline set by Sevenoaks District Council.

KCC Community Wardens

A valued element of the Community Warden role remains the uniformed presence which helps build community confidence and reassurance by reducing crime, the fear of crime, deterring ASB, improving access to local authorities and fostering social inclusion. The warden's overriding objective remains '*to create safer and stronger communities*'. They work closely with/on behalf of other operational units within KCC and Community Safety Partners to address a wide range of issues. However, following approval from KCC's Cabinet in February 2024, the budget for the wardens service will be reduced by 50% over the next two years, which will see the warden service move to a more geographically targeted service based on local needs in both rural and urban communities.

ASB incl Environmental Crime				
	Priority Action	Lead Agency	Other Partners	By When
2.1	Increase number of enforcement interventions and prosecutions for fly tipping using all actionable evidence. Increase the number of partnership, cross border and community working actions in repeat locations.	SDC Direct Services CSU	KCC Wardens PCSOs Housing Assoc	March 2025
2.2	Increase the number of referrals from partners to the District Contextual Safeguarding Meeting (DCSM) for young people and Community MARAC (Multi-Agency Risk Assessment Conference). This will include talking and working with partner agencies on how to refer	KCC Youth Services Kent Police	KCC Youth Offending Services Probation Services Mental Health Schools All Partners	March 2025
2.3	Reduce the number of young people entering the Criminal Justice System for the first time	All Partners		March 2025
2.4	Continue to set up Task and Finish Groups to deliver a focused approach to reducing repeat ASB and use ASB Powers through the 2014 ASB Act where appropriate such as Closure Orders, Community Protection Notices and Criminal Behaviour Orders. Invite Community Wardens to Task & Finish Groups where issues pertain to their home communities. Team members have a great breadth of knowledge (issues, useful local stakeholders etc) that would enhance the partnership approach and ensuing actions.	CSU	All	March 2025
2.5	Partnership Activities in line with National & International events for example ASB Awareness Week 1-7 July 2024 National Hate Crime Awareness Week 14-21 October 2024 Euros June 2024	Police WKHA/Moat Housing SDC	All Partners	March 2025

2.6	Number of community safety events either attending on behalf of another organisation or arranged by CSU	CSU	Police KCC Community Wardens Housing Assoc	March 2025
2.7	Number of site visits and task and finished groups attended to address ASB	CSU		March 2025

Domestic Abuse incl Stalking & Harassment

Please note: Domestic Abuse incidents are not reported as violence against the person. If there has been no violence recorded. For example, if there was a verbal altercation, this would be recorded as a Domestic Abuse Incident and not Violence against the Person and that is why the numbers are different.

It is important to remember that these figures are only representative of domestic abuse that was reported to the Police and it is widely recognised that there is a figure of domestic abuse, which remains unreported. The Domestic Abuse Act 2021 has given more powers and increased responsibility to the Police, Courts and local authorities for the protection of victims of domestic abuse.

Domestic Abuse incidents in the Sevenoaks District have decreased by 419 crimes (16.8%). The District has the lowest number of Domestic Abuse incidents in the county (071)², Please note: Domestic Abuse incidents are not always reported as violence against the person, if there has been no violence recorded.

Sevenoaks District Council and the CSP fund a number of projects to address domestic abuse, including:

- 12-week Freedom Programme runs 6 x a year including 2 evening sessions and 3 x 12 week Recovery Tool Kit, which is a follow on from the Freedom programme. On average 8-10 women attend these programmes.
- Community Domestic Abuse Perpetrators Programme runs weekly on a Wednesday evening. For this time period the programme is run online with an average of 8 men attending weekly. The programme is a rolling programme that runs for 27 weeks.
- DAVSS (Domestic Abuse Voluntary Support Services) provides a support service for low and medium risk victims. In the period 1 October 2022 to 30 September 2023, they supported the following number of people in the Sevenoaks District – previous assessments have shown statistics at a West Kent level.

² Apparent inconsistency in annual figures arises from the classification of 'incident'. Domestic abuse 'incidents' are not necessarily violent and can refer to verbal disputes which have been reported to Kent Police; as such, not all incidents make it into statistics for violence against the person.

Oct 21-Sept 23	Oct 2022 - Dec 2022	Jan 2023 - March 2023	April 2023- June 2023	July 2023 - Sept 2023	Total
Referrals (Total, including Men)	75	65	59	58	127
Referrals (Men)	2	2	2	2	8
Children supported	113	119	79	80	391
Repeat cases	4	7	7	6	24
Total of volunteer case work hours	1099	1153	831	Not recorded	3083

Look Ahead belongs to a consortium of organisations called Kent Integrated Domestic Abuse Service (KIDAS). Between 1 October 2022 to 30 September 2023, they received the following referrals:

Oct 22-Sept 23	
IDVA referrals	334
Refuge referrals	31

Look Ahead continue to work in partnership with Police and the Vit Pro team. This service supports victims who were repeat or hard to reach and non-engagers. Look Ahead currently run two support programmes currently Own My Life and Phoenix. There were over 90 participants in these programmes during the reporting period.

There were 904 reports to Police for stalking and harassment for the Sevenoaks District. This is a decrease of 275 compared to the same period last year (Oct 2021- Sept 2022. Protection Against Stalking (PAS) provided the following update for use of their full advocacy and short-term support services:

	Jan - Mar 23			Apr - Jun 23			Jul - Sep 23		
	Full Advocacy Support	Short Term (Initial Support & Safety Advice)	TOTAL	Full Advocacy Support	Short Term (Initial Support & Safety Advice)	TOTAL	Full Advocacy Support	Short Term (Initial Support & Safety Advice)	TOTAL
Tunbridge Wells	12	32	44	13	27	40	12	21	33
Sevenoaks	12	21	33	8	17	25	11	19	30
Tonbridge and Malling	7	12	19	20	29	49	9	30	39

Maidstone	18	55	73	10	40	50	20	62	82
Dartford	6	8	14	8	30	38	10	39	49
Gravesend	0	1	1	8	42	50	8	37	45
Sub total	55	129	184	67	185	252	70	208	278
Rest of Kent	14	31	45	17	40	57	5	43	48
Outside of Kent	5	100	105	10	71	81	6	69	75
Outside of UK	0	8	8	0	2	2	0	3	3
Total	74	268	342	94	298	392	81	323	404

Domestic Abuse incl Stalking & Harassment

	Priority Action	Lead Agency	Other Partners	By When
3.1	Support national campaigns including: International Women's Day 16 Days of Action Deliver a Conference within the 16 Days of Action	DAVSS WK Domestic Abuse Forum KCC Commissioned Service	All Partners	On Going
3.2	Work with DAVSS & Look Ahead to ensure that all victims of domestic abuse can receive support	DAVSS	WK Domestic Abuse Forum	March 2025
3.3	Support the Kent DA Steering Group and its sub groups to develop and deliver work in support of the Domestic Abuse Act 2021	West Kent DA Forum KCC Commissioning Team	All Partners	On Going
3.4	Delivery of funded programmes including Freedom Programme, Community Domestic Abuse Perpetrators Programme, Recovery Tool Kit and DAY programme in schools.	CSP	DAVSS PAS Look Ahead	Ongoing
3.5	Take forward actions from the West Kent Domestic Abuse Conference held in December 2023 tackling services for young people and addressing the effects of abuse for young people	West Kent DA Forum LookAhead PAS DAVSS	Housing Associations Kent Police	Ongoing

Domestic Abuse incl Stalking & Harassment

	Priority Action	Lead Agency	Other Partners	By When
3.6	Achieve DAHA accreditation for the Council in partnership with the CSP and other partners	SDC CSU SDC Housing	Housing Associations	June 2024
3.7	Deliver safe packages for PAS clients to include personal alarms, window lock, safety information	CSU	PAS	May 2024
3.8	Deliver awareness training on stalking and harassment to local community groups and practitioners	PAS	West Kent Domestic Abuse Forum	On Going
3.10	Work with Domestic Abuse Services, Kent Police and Protection against Stalking on tackling Forced Marriages, Female Genital Mutilation and Honour Based Violence and link with the Serious Crime Duty	DAVSS LookAhead Police PAS	West Kent Forum CSU	December 2024

Safeguarding including Young People, Adults at Risk, Child Sexual Exploitation, Modern Slavery, Human Trafficking, Prevent, Care Act and Mental Health

Safeguarding includes Young People, Adults at Risk, CSE, Modern Slavery, Human Trafficking, Prevent, Care Act, Missing Children and Mental Health.

Legislation places a statutory duty on local councils as well as some of the other partner agencies to protect the vulnerable under these crimes. It is also a major contributor to the Kent Police Strategy and is considered a community concern.

The cost of living, the subsequent war in Ukraine and consequential energy challenges, followed by rising inflation and interest rates, have added to the mounting concern and resulted in large scale government interventions. The cost of living crisis is putting more people at risk of crime. This includes those being exploited by criminals (for example young people being groomed to carry drugs, used to launder criminal money or sexually exploited).

Human Trafficking and Modern Slavery

For the period of 01/10/22 - 30/09/23, Kent Police recorded 4 Modern Slavery & Human Trafficking related investigations in the Sevenoaks District.

Child Sexual Exploitation (CSE)

There were 3 reports of CSE in the Sevenoaks District. The Community Safety Manager continues to be a CSE Champion for the CSP and District Council.

Prevent

There have been 4 referrals to the Kent Channel and Prevent Multi-Agency Panel, which have been progressed to ensure a multi-agency approach to identify and support individuals at risk of being drawn into terrorism. The Channel Panel is an early intervention scheme that supports people who are at risk of radicalisation and provides practical support tailored to individual needs. It can help people to make positive choices about their lives.

Child Grooming: Model type

Within Kent, the predominant 'Model' type experienced is the 'Inappropriate Relationship', where child grooming involves an offender having an inappropriate amount of power or control over a young person, due to a large age gap, or a disparity in wealth or status. Similarly to the relationship model, the young person may believe that they are in a loving relationship, whereas they are actually being manipulated by the person they are with.

Child grooming isn't limited to any one medium, with child grooming online becoming more common. However, other types of 'Model' experienced also include, 'Gangs', 'Peer to Peer' and 'Trafficking', but to a much lesser extent. There have been occasions in Kent where females who have initially been highlighted as potential victims have later come to notice as facilitators and potential perpetrators of CSE.

Adults at Risk

When a person goes missing from their care home or home Kent Police will complete an At Risk of Going Missing Form which will be completed with the details of location found, any medical history and contact details for their GP and family contact with a recent photo. Should they go missing again this information can be sent to officers to assist in the fast locating of the person.

There were 1029 reports across the District to KCC Social Services of Adults at Risks/Concerns.

Vulnerable Young People

The DCSM (District Safeguarding Contextual Meeting) is held every month and from the period 1 October 22- 30 September 23 over 50 young people and locations have been discussed by partner agencies. The Police new structure has a child centered policing team and figures for them will be available in next year's assessment.

Mental Health

The CSU daily tasking's have seen an increase in mental health in ASB and Domestic Abuse cases. The number of people sectioned under 136 between 1 October 2022 – 30 September 2023 was 12, a decrease of 8 compared to same period in the previous year and lowest in the County.

Safeguarding including Young People, Adults at Risk, Child Sexual Exploitation, Modern Slavery, Human Trafficking, Prevent, Care Act and Mental Health

	Priority Action	Lead Agency	Other Partners	By When
4.1	Work with agencies from the Youth Mentoring Plus Programme. Investigate funding streams for this work to continue.	SDC	All Partners Town & Parish Councils	On Going
4.2	Support the Health & Wellbeing Action Team to deliver their actions to address Mental Health	CSU	All Partners	On Going
4.3	KCC Prevent Team to deliver training to partners and businesses on Counter Terrorism	KCC Prevent Team	CSU	March 2025
4.4	Police to provide an analytical product on Modern Slavery and Human Trafficking every quarter so that the Partnership can help take action to address this. Work on action days through evidence provided	Police SCD	CSU All	March 2025
4.5	Attend Channel Panels where appropriate and provide support to individuals when required and Promote the Prevent Strategy within the community via Social Media etc.	CSU KCC Prevent Team		March 2025
4.6	Work with Adults at Risk and sign post to appropriate services including HERO, Social Services, Private Sector Housing, Kent Police, Community Wardens & Peabody.	PCSO Vulnerable Adults	CSU All Partners	On going
4.7	Work with partner on national campaigns such as National Safeguarding Week in December 2024	KCSMP KMSAM	CSU	December 2024

Violence against Women & Girls (VAWG)

Violence against women and girls is a national priority, and we share the national commitment to ensure women and girls are safe. The Kent Police and Crime Commissioner's Police and Crime Plan entitled 'Making Kent Safer 2022- 2025' includes VAWG as a priority. In addition, the Kent Police and Crime Commissioner (PCC) established a Violence Against Women (VAWG) inquiry report was published in the summer of 2022. The Victim's Panel was set up to support the inquiry, and their work continues to inform strategy development. Key themes from the panel includes victims feeling as traumatised, if not more so, by the criminal justice process as the crime(s) themselves, a perception there was no consideration or flexibility to work around victim's life, with the victim expected to work on the system's terms and a common belief that there is unconscious bias at work.

VAWG is at the core of the Kent Police control strategy. This can broadly be broken down into four key areas: prioritising prevention, supporting victims, pursuing perpetrators and a stronger system. The CSP have an important part to play. Awareness of VAWG criminality, such as Stalking and Child Sexual Exploitation, should be raised within the CSP, electorate and the wider community. Access to victim support services should be explored and promoted. Schemes like Best Bar None should be reinforced in order to reduce VAWG offending in the night time economy.

Breakdown	Recorded Offences/Incidents					County Position	
	This Year	Last Year	% Change	No. change	Direction	21/22	22/23
Total VAWG	1636	1992	-17.9%	-356	▼	1	1
Domestic Abuse related	909	1162	-21.8%	-253	▼	2	1
Non-Domestic Abuse related	727	830	-12.4%	-103	▼	1	1

The CSU (Police & SDC) completed 3 VAWG walks in Swanley, New Ash Green and Edenbridge to talk to women about feelings of safety and any improvements that could be made. Most that were spoken to say they felt safe, but enquired about more lighting in some areas which were all passed to KCC Highways.

A West Kent VAWG Group for Public Spaces was set up in May 2023 and are now having regular meetings every quarter and have an action plan. A joint consultation was going out in December 2023 to address local concerns. This will be followed by a school consultation as well.

Violence against Women & Girls (VAWG)

	Priority Action	Lead Agency	Other Partners	By When
5.1	Following the public consultation for VAWG in Public Spaces, review the responses and deliver on the action plan for the West Kent VAWG Group to take forward	West Kent VAWG Group	All Partners	March 2025
5.2	Deliver a rolling programme of VAWG Walk and Talks across the District	Kent Police CSU	All Partners	March 2025
5.3	Work with agencies to deliver defence classes for women and girls across the District	CSU	All Partners	March 2025
5.4	Deliver an action plan for the 16 days of no violence and addressing Domestic Abuse and VAWG in November to include a white ribbon video	CSU	DAVSS PAS Look Ahead	November 2023
5.5	Consultation on VAWG to be done throughout the schools and delivered via the Child Centered Police Team	Kent Police CSU	All Partners	Sept 2024
5.6	Work within schools on healthy relationships	Kent Police DAVSS	CSU	Sept 2024
5.7	Deliver Training on VAWG for partners and keep website up to date	CSU	Kent Police	March 2025

Business Crime

Kent Police reported shoplifting for Sevenoaks District showed 579 offences of shoplifting. This is an increase compared to the same period last year (1 Oct 22- 30 Sept 23) of 106 crime (22.1).

The Safer Towns Business Crime Partnership also saw an increase of shoplifting offences from Sevenoaks retail high street stores. Using Kent Police own website crime figures, incidents recorded show an increase of 34 shop thefts (22%) compared to last year's reporting period.

By comparison, the Swanley shopping area of St Mary's has also seen an increase in shoplifting activity recording a figure of 21 additional reports (46%), while White Oak only increased by 6 (2%).

Burglary Business & Community also saw an increase of 15 crimes compared to same period as last year with 128 recorded crimes (13.3%)

A Business Crime meeting was set up by Kent Police in October 2023 and meets regularly with local businesses, retailers and other local partners.

Business Crime				
	Priority Action	Lead Agency	Other Partners	By When
6.1	Business Crime meeting to be District wide to include all Towns a Parishes where retail/shoplifting is a crime	Kent Police Safer Town Partnership	CSU	March 2025
6.2	Use the Community MARAC to educate, support and use enforcement of perpetrators of Shoplifting through referrals from businesses and Safer Towns Partnership	Safer Towns Partnership Local Businesses	Kent Police CSU	March 2025
6.3	Increase number of prosecutions for repeat offenders to include Criminal Behaviour Orders	Kent Police	Local Businesses	March 2025
6.4	Increase number of members into the Safer Towns Partnership	Safer Towns Partnership	CSU	March 2025
6.5	Respond to ASB issues through the Daily Tasking where retailers have been affected	CSU	All Partners	March 2025

Drugs & County Lines

Drugs

Drug offences have increased from 151 to 201 an increase of 50 reports. The District remains the lowest in the County for Drug reports. There is a high number that is also under reported of drug offences.

There has been an increase of young people reported using drugs and especially the gas canisters and the CSU are working with agencies and schools that bring into line the new legislation and law around misuse of nos canisters.

Kenward Trust is funded by the CSP and continue to do outreach work across the District. The focus in 2024/2025 is to continue to support young people caught up in exploitation, grooming and gang culture. With the continued work of reducing ASB and Substance misuse the teams see over 350 young people each quarter and build up good relationships with hard to reach young people.

The team went to all locations that was identified by the CSU to support the young people.

CGL work closely with a range of partner agencies to improve outcomes for substance misusers. Greensands, a supported housing project in Sevenoaks, is assisted by CGL through the provision of group work and peer support to residents for their substance misuse. A joint working programme has also been developed with West Kent Mind to deliver CGL programmes on a weekly basis and a bi-weekly drop in and referral service for Mind service users. This will facilitate better access to drug and alcohol services for these clients.

Addaction are commissioned by Public Health to deliver services to young people.

County Lines

Over the past year there has been a number of County Lines identified in the District, which is naturally linked to gang and gang culture, which is seen by some young people as a “status”. The CSP has been working with the Violent Reduction Unit in working with young people in County Lines and support groups that can be referred to. In September 2022 the CSU received £18k to tackle County Lines and work with young people.

Drug Misuse and County Lines

	Priority Action	Lead Agency	Other Partners	By When
7.1	Deliver outreach work to designated areas to address substance misuse using CSU reports via the Daily Tasking	Kenward Trust	CSU Schools Youth Groups	March 2025
7.2	Provide training for front line workers on County Lines & Drug	Kenward Trust VRU Kent Police	CSU	Dec 2024
7.3	Through the VRU Funding deliver on activities to reduce county lines, drugs and violent crime that links in with the Serious Violence Duty	VRU CSU Kent Police	All Partners	March 2025
7.4	Work with the Child Centered Policing Team in joint initiatives in schools (primary and secondary)	Kent Police Kenward Trust VRU	CSU	March 2025
7.5	Police, Wardens and Housing Associations to continue to gather intelligence on local County Lines so that positive action can be achieved and reduce serious violence as per the Serious Violence Duty	Police Housing Associations KCC Wardens	CSU	Ongoing
7.6	Violent Reduction Unit (VRU) to use Community MARAC to make referrals for young people & DCSM	VRU KCC Youth Services	All Partners	On Going

Membership of the Community Safety Partnership and contact details

<p>Sevenoaks District Council Argyle Road Sevenoaks Kent TN13 1GP Tel: 01732 227000 www.sevenoaks.gov.uk</p>	<p>Kent Police 1 Pembury Road Tonbridge Kent TN9 2HS Tel: 01622 690690 www.kent.police.uk</p>	<p>Kent Fire & Rescue Service West Group HQ Sevenoaks Fire Station London Road, Sevenoaks Tel: 01622 692121 www.kent.fire-uk.org</p>	<p>Police & Crime Commissioner Kent Police Headquarters Sutton Road Maidstone ME15 9BZ Tel: 01622 677055 www.kentpa.kent.police.uk</p>
<p>West Kent Health and Care Partnership Dartford, Gravesham and Swanley Health and Care Partnership https://www.kmhealthandcare.uk/about-us/our-system/health-and-care-partnerships</p>	<p>Kent Surrey and Sussex CRC Ltd Maidstone Corporate Centre 3rd Floor, Maidstone House King Street Maidstone Kent, ME15 6AW Tel: 01622 239147 www.ksscr.co.uk</p>	<p>KCC Social Services The Willows, Hilda May Ave, Swanley Kent BR8 7BT Tel: 0300 041 1400 www.kent.gov.uk</p>	<p>Imago 17-19 Monson Road Tunbridge Wells Kent TN1 1LS Tel: 01892 530330 www.imago.org.uk</p>
<p>KCC Early Help & Preventative Service C/o Swanley Youth Centre St. Mary's Road Swanley Kent BR8 7BU Tel 01322 615275 www.kent.gov.uk</p>	<p>Protection Against Stalking Town Hall, Tunbridge Wells Referrals support@protectionagainststalking.org www.protectionagainststalking.org</p>	<p>KCC Community Safety Team Maidstone Fire Station Loose Road Maidstone Kent ME15 9QB www.kent.gov.uk</p>	<p>West Kent Housing Association / West Kent Extra 101 London Road Sevenoaks Kent TN13 1AX Tel: 01732 749400 www.westkent.org</p>
<p>Kenward Trust Kenward Road Yalding, Maidstone Kent ME18 6AH Tel: 01622 814187 www.kenwardtrust.org.uk</p>	<p>MOAT Homes Galleon Boulevard, Crossways Dartford Kent DA2 6QE Tel: 0300 323 0011 Web: www.moat.co.uk</p>	<p>Change Grow Live (Drug and Alcohol Services) 18 Mount Pleasant Road Tunbridge Wells TN1 1QU https://www.changegrowlive.org/westkent/help#contact</p>	<p>DAVSS PO Box 530 Tunbridge Wells Kent TN2 9TB Tel: 01892 570538 Web: www.davss.org.uk</p>

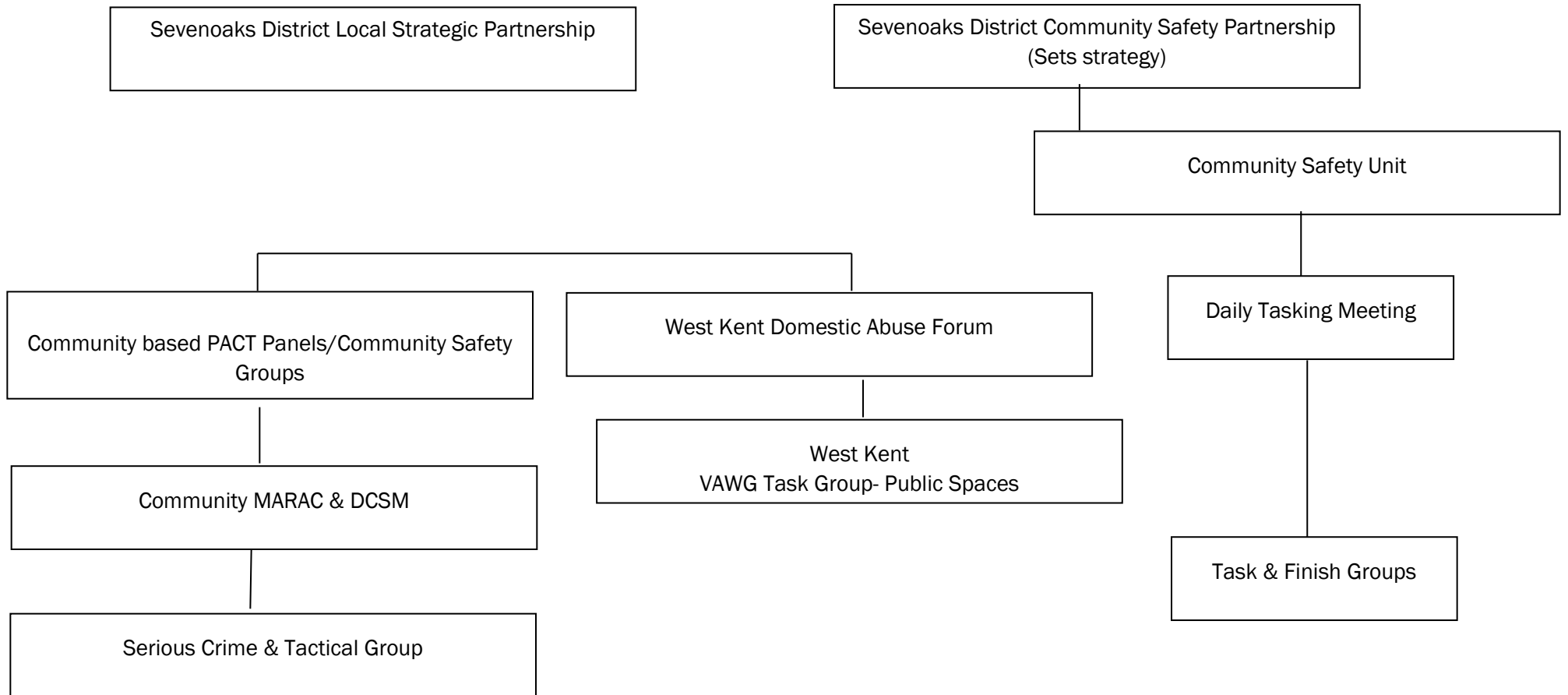
The Community Safety Partnership has direct links to Kent Public Health alongside the Kent Adults Safeguarding Board and the Kent Safeguarding Children Multi-Agency Partnership.

Terms of Reference

The Sevenoaks District Community Safety Partnership's terms of reference aim to:

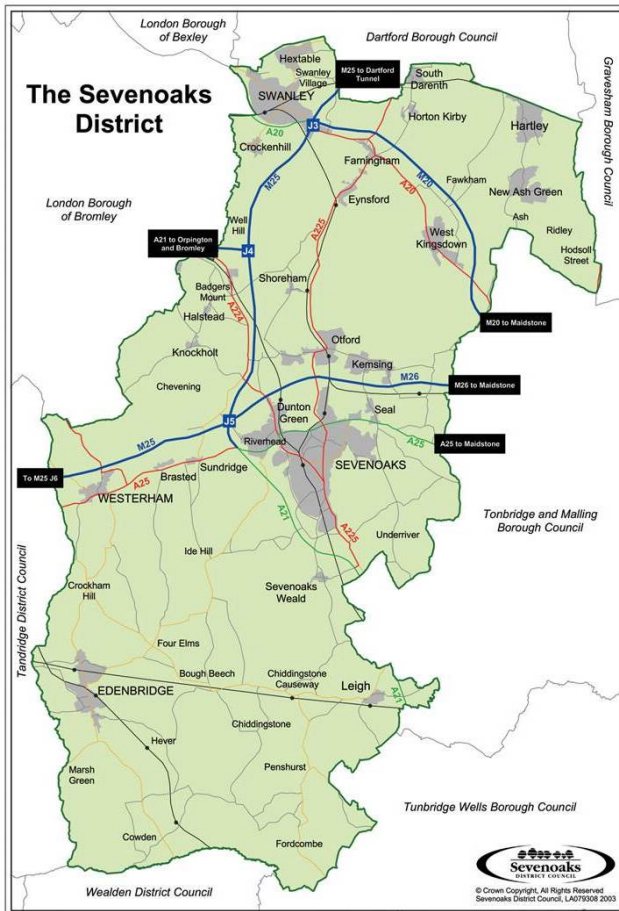
- Undertake periodic reviews of community safety in the District and disseminate the findings to the public
- Develop a yearly strategy and action plan to tackle community safety in the Sevenoaks District
- Monitor and report progress in meeting the agreed targets and actions
- Secure resources and funding from parent organisations and others for projects to address agreed shared priorities in the Community Safety Action Plan
- Act as a forum for discussion of topical local community safety issues and agree follow up actions if appropriate
- Promote community safety in the District in conjunction with other local organisations and bodies
- Co-ordinate and maintain an overview of all activities relevant to community safety in the District.

Structure and Meetings Sevenoaks District Community Safety Partnership Meetings



What is the Sevenoaks District like?

Sevenoaks District continues to be one of the safest places to live in Kent. Sevenoaks is a large District lying to the south east of London with an overall area of just over 143 square miles (370 square km). It is long and relatively narrow measuring 20 miles north-south by about 7 miles east-west. The Thames Gateway lies to the north, Surrey and East Sussex to the west and south and the rest of Kent, including Tonbridge and Tunbridge Wells to the east and south east. Despite adjoining the outer edge of London it is predominantly rural with 93% of the District designated as Green Belt.



Train services to London take just under 30 minutes from Swanley and just under 30 minutes from Sevenoaks.

Sevenoaks District is perceived to be affluent but this masks local pockets of urban and rural deprivation. For example, Swanley St Mary's ward falls within the 10% most deprived wards in Kent and the South East (2015, Indices of Multiple Deprivation).

11.6% of children under 16 (2,465) live in low-income families in receipt of Child Tax Credit where rural deprivation is more isolating than poverty in the towns. The majority of children living in poverty (73.9%) live in lone parent families.

According to the Kent County Council housing led population forecast projections, the population of Sevenoaks District is forecast to grow by more than 13,500 by 2028.

The 2017 mid-year population estimates (Office for National Statistics) show that Sevenoaks District has a population of 119,400 residents and the third lowest population density in Kent measured at 3.1 persons per hectare.

According to Kent County Council the number of people over 65 is forecast to rise by 41.1% by 2036 (10,400 people) and the number of people over 85 is forecast to rise by 97.2% by 2036 (3,500 people).

Enquiries to:

CSU

Sevenoaks District Council
PO Box 183, Argyle Road
Sevenoaks, Kent TN13 1GP
Telephone 01732 227000

E-mail community.safety@sevenoaks.gov.uk

